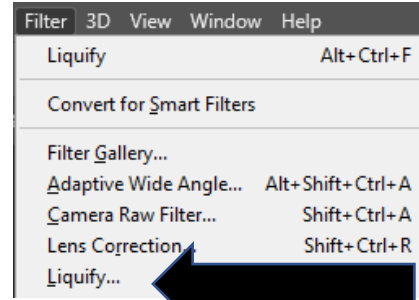




> STEP 1

Choose a suitable photograph of a **person** where you can clearly see their **face**. Use **Pixabay** or **Pexels**.

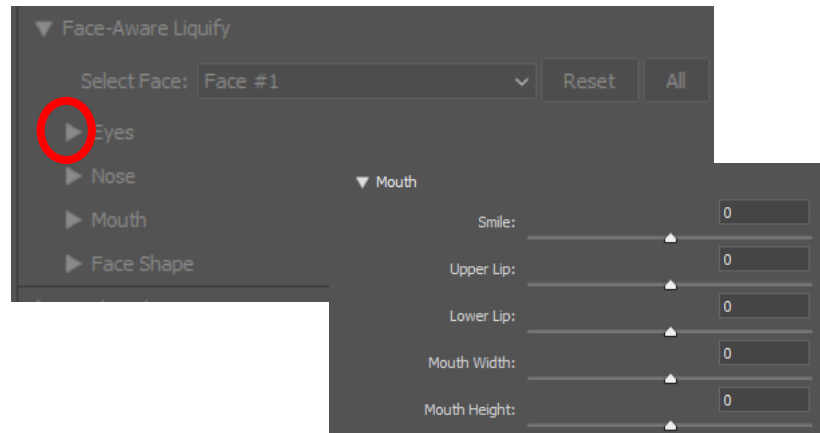
> STEP 2



At the top of Adobe Photoshop CC, choose **Filter** then **Liquify**.

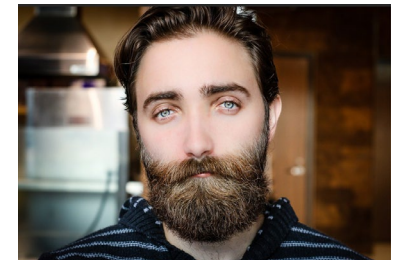
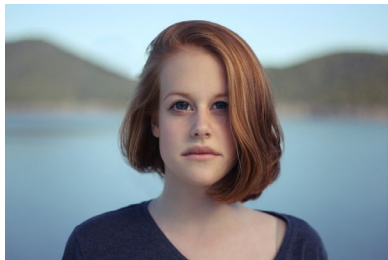
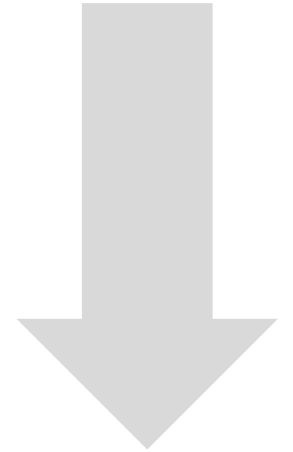
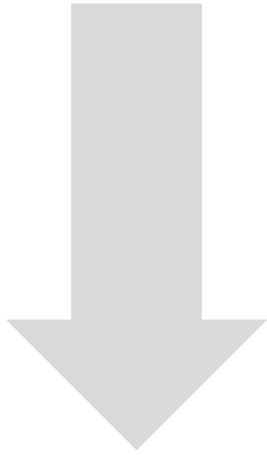


> STEP 3



Press the **triangle** on **Eyes**, **Nose**, **Mouth** and **Face Shape** to adjust them!

Choose **OK** when you're done!



Change facial features in Adobe Photoshop CC in minutes

FACE LIQUIFY