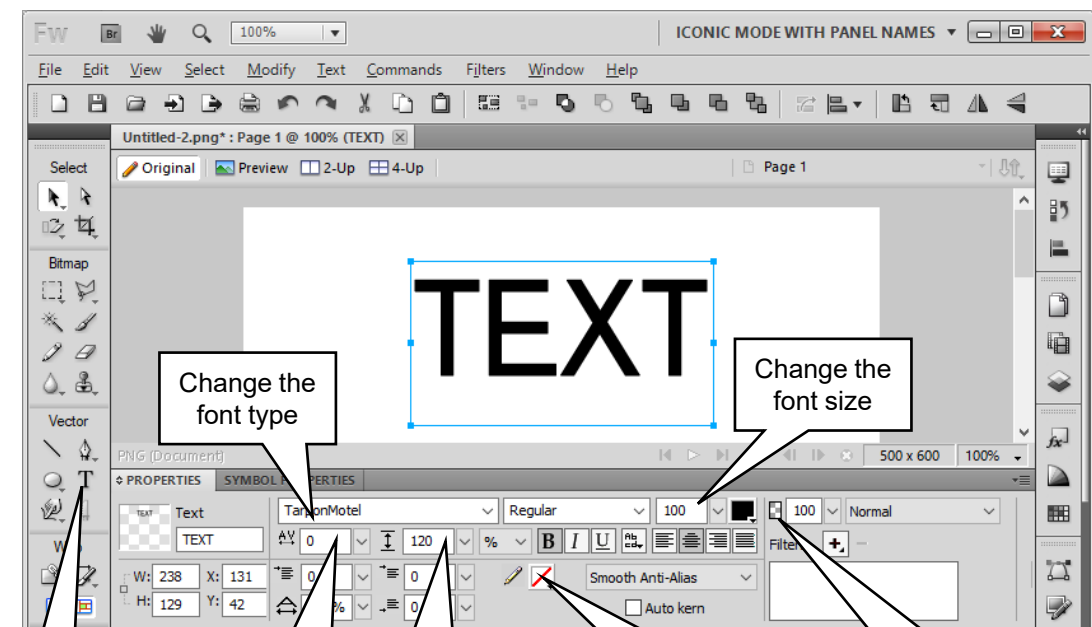


# THE BASICS



Change the font type

Change the font size

Enter text into your graphic by left-clicking on the **Text Tool** icon (the T)

**Kerning** changes the space between characters  
  
Try a – number to bring letters closer together

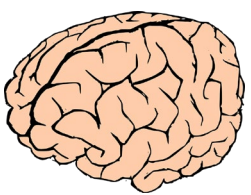
**Leading** is the space between baselines  
  
Try reducing the number to bring two lines of text together

You can change the edge of the font using the **Outline Tool**  
  
Experiment with **Stroke Options** to change the brush that is used

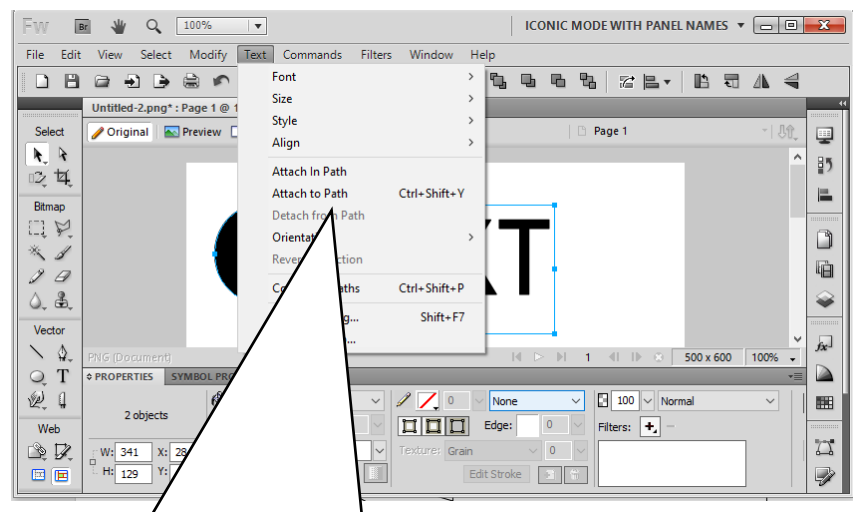
You can colour of the using Fill options  
  
Experiment with **Fill Options** to get effects like Gradients

# LEGISLATION

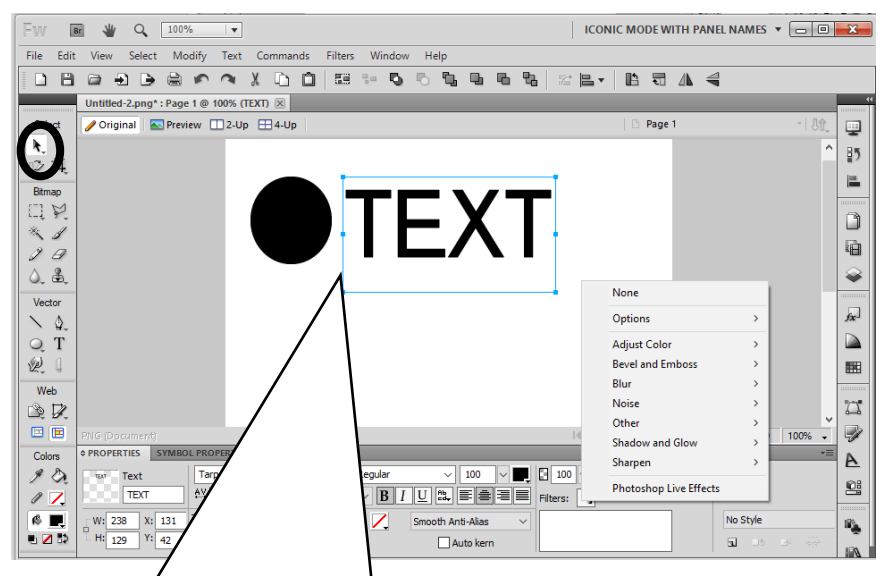
When creating text for commercial purposes you need to ensure you don't break copyright. Fonts can be copyright so if you are creating graphics like logos you need to ensure you stay within the law!



# CHALLENGE YOURSELF



You can get text to follow a path by drawing a shape as well as text the holding down the shift key and using **Attach to Path**



Select your text then **Filters** will appear in the **Properties window**  
Experiment with the options such as **Shadow and Glow** – you can choose the colour you want to use