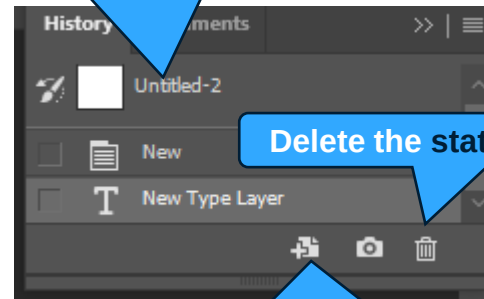


## 1 History Window



If you make a mistake you can click through your Photoshop history (if you go back too far you can click further down again!)



Delete the state

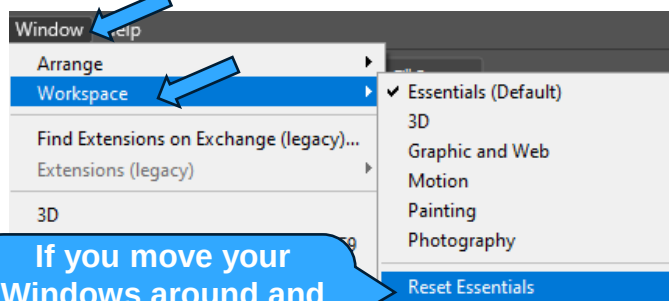
Create a new Photoshop document from the state you've selected

## 2 Zoom



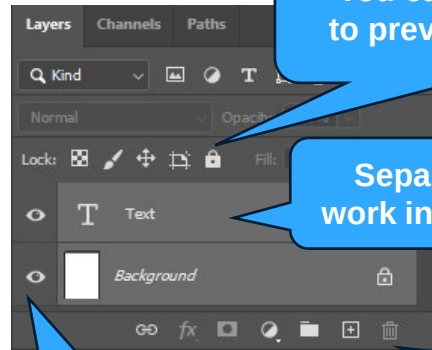
Access from the toolbar or Use Ctrl + to zoom in and Ctrl - to zoom out

## 3 Reset Essentials



If you move your Windows around and want them back how they were at the start press this!

## 4 Layers



You can lock a layer to prevent accidents!

Separate your image work into different layers

Delete a layer

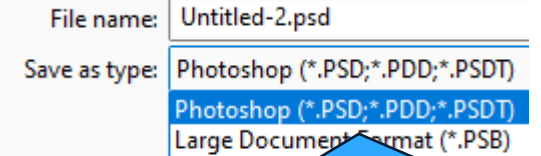
You can hide/show layers

Add a new layer

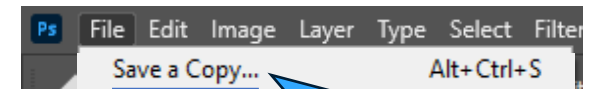
## 5 Saving & Exporting



Always save your Photoshop work FIRST so you can edit it again



PSD is the Native file format



Save a Copy will let you save in all image formats e.g. JPG (useful for the web)

GIF (\*.GIF)  
IFF Format (\*.IFF;\*.TDI)  
JPEG (\*.JPG;\*.JPEG;\*.JPE)  
JPEG 2000 (\*.JPF;\*.JPX;\*.JP2;\*.J2K)  
JPEG Stereo (\*.JPS)  
Multi-Picture Format (\*.MPO)  
PCX (\*.PCX)  
Photoshop PDF (\*.PDF;\*.PDP)  
Photoshop Raw (\*.RAW)  
Pixar (\*.PIR)  
PNG (\*.PNG;\*.PNG)  
Portable Bit Map (\*.PBM;\*.PGM;\*.PPM;\*.PNM;\*.PFM;\*.PAM)  
Scitex CT (\*.SCT)  
Targa (\*.TGA;\*.VDA;\*.ICB;\*.VST)  
TIFF (\*.TIF;\*.TIFF)